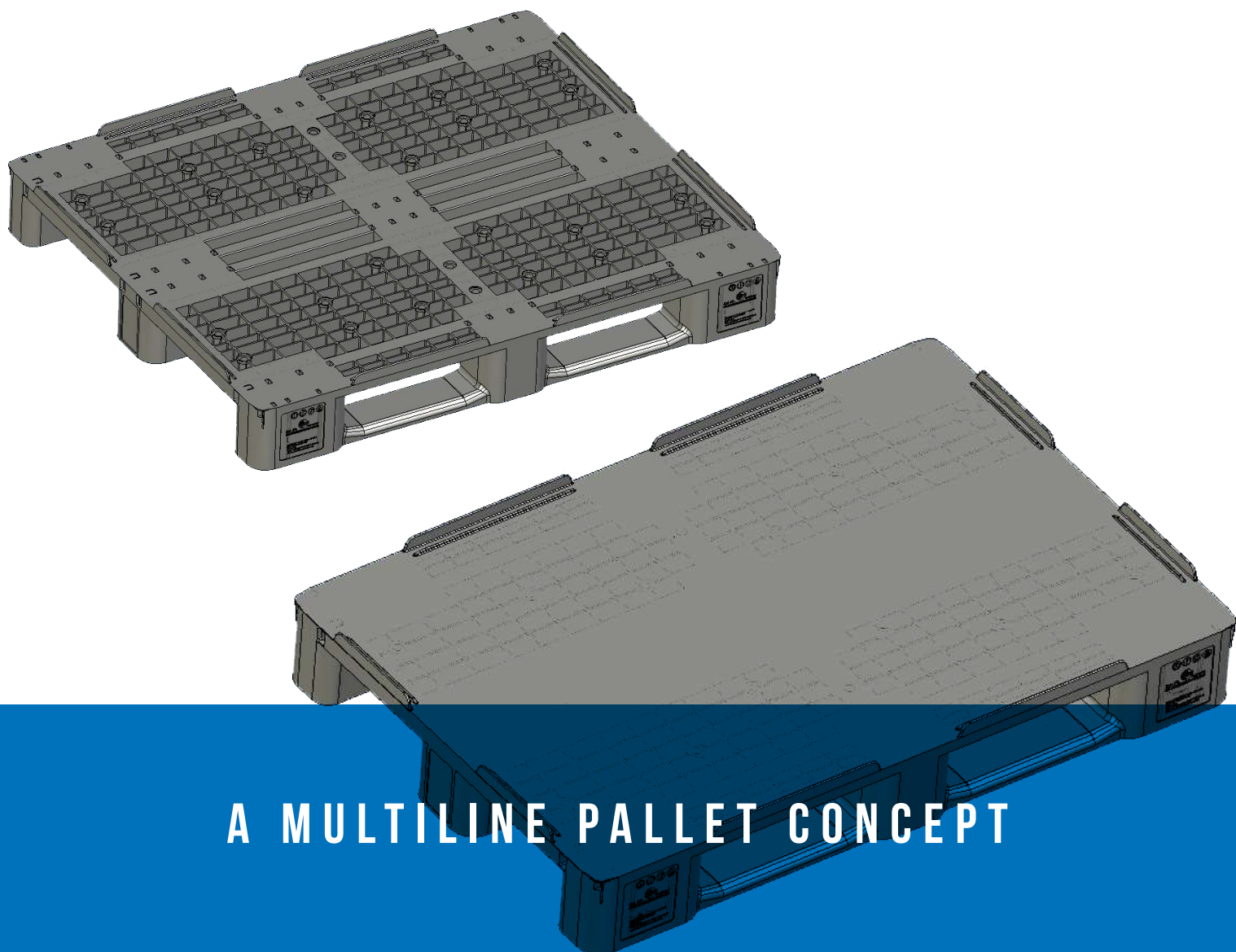


# IPG MEDIUM PALLET CONCEPT

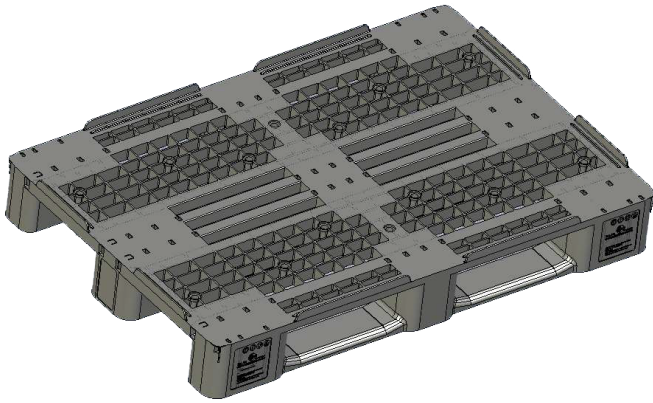
## 1200X800 / 1200X1000



A MULTILINE PALLET CONCEPT

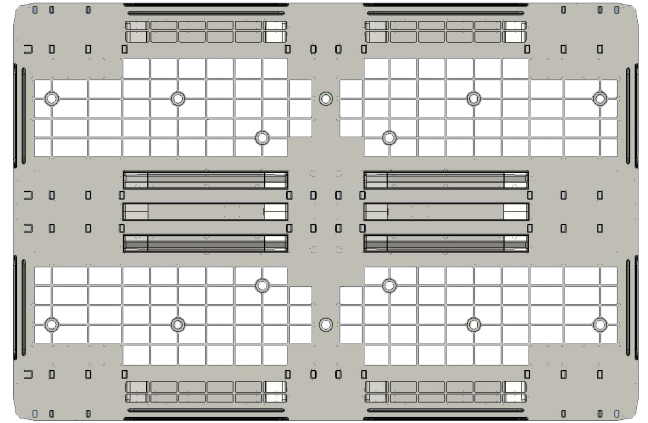
# 1200X800 OPEN DECK

CAN COMBINED WITH **SLEEVE AND LID**



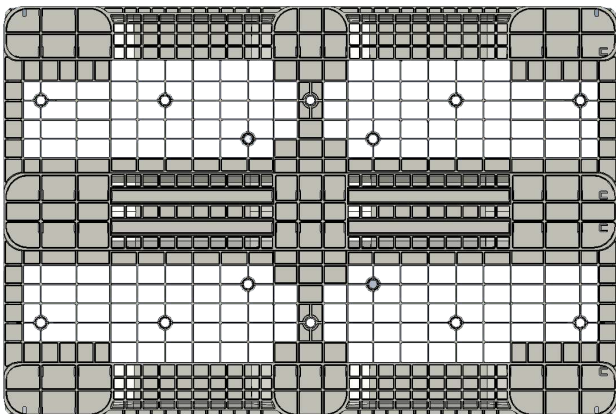
## 1200x800 Open Deck

Planned component weight: 11.0 - 11.5 kg



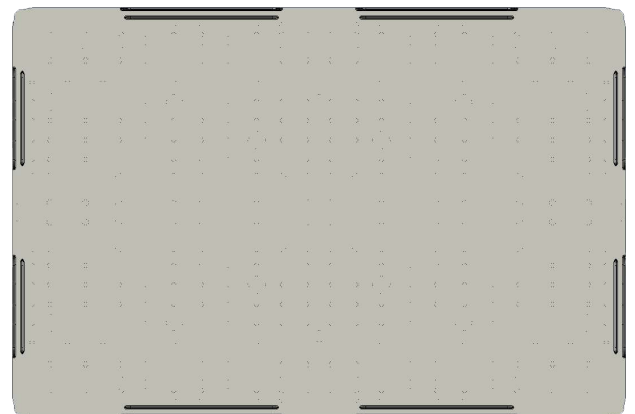
## 1200x800 Open Deck top

Can be added with steel reinforcement



## 1200x800 Open Deck Under

Rubber insert an option for Anti Slip

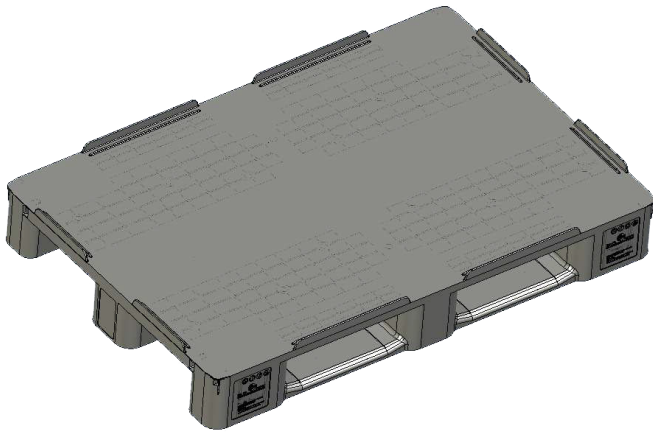


## 1200x800 for sleeves

Add Sleeves and lid

# 1200X800 **CLOSED DECK**

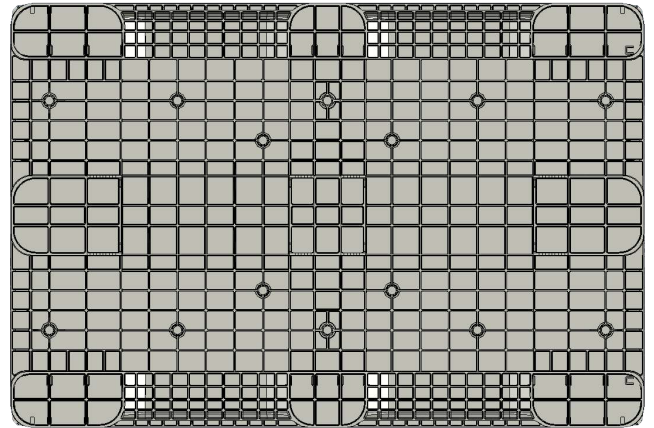
CAN COMBINED WITH **SLEEVE AND LID**



## **1200x800 Closed Deck**

---

Planned component weight: 13,5 - 14 kg



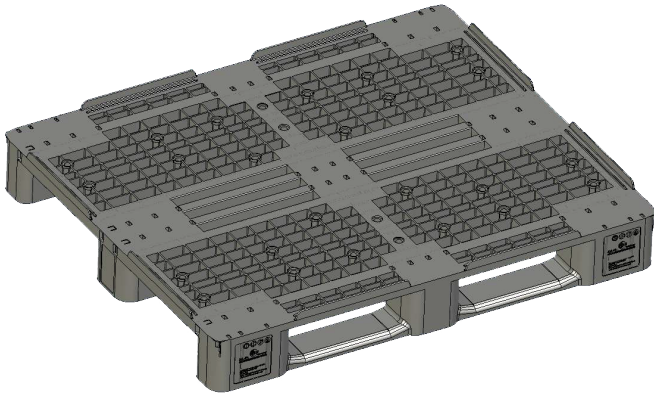
## **1200x800 Closed Deck Under**

---

Can be added with steel reinforcement

# 1200X1000 OPEN DECK

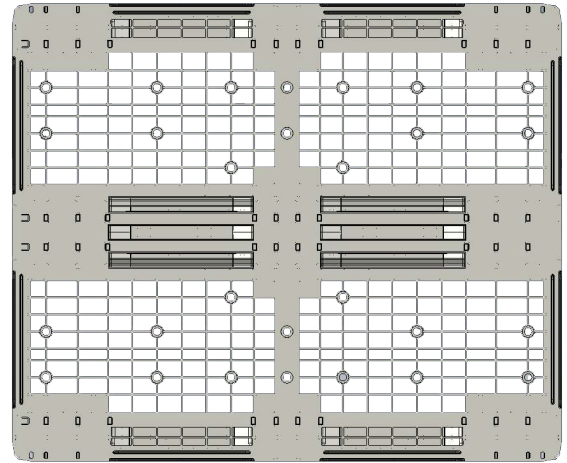
CAN COMBINED WITH **SLEEVE AND LID**



## 1200x1000 Open Deck

---

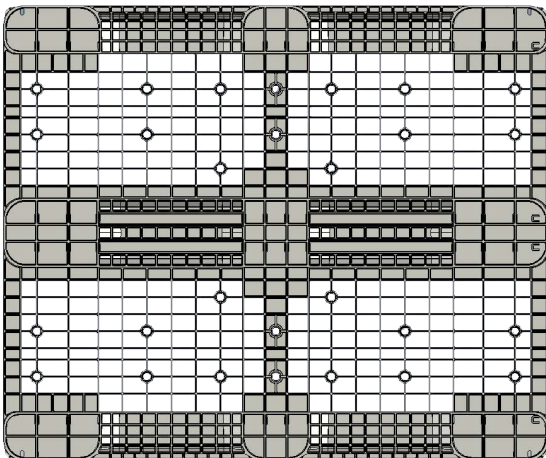
Planned component weight: 12,5-13 kg



## 1200x1000 Open Deck top

---

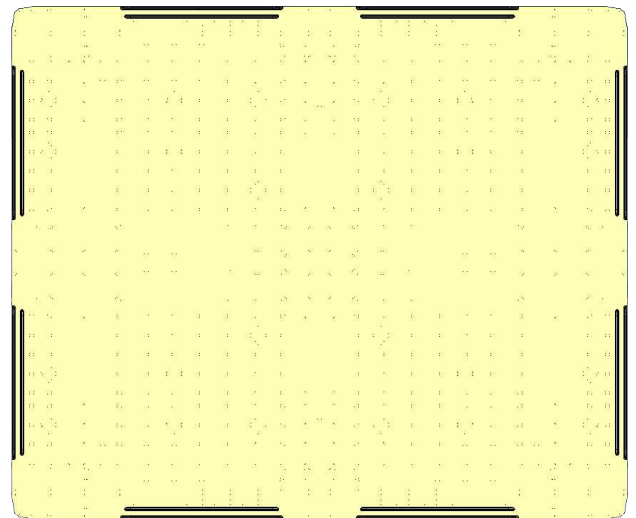
Can be added with steel reinforcement



## 1200x1000 Open Deck Under

---

Rubber insert an option for Anti Slip



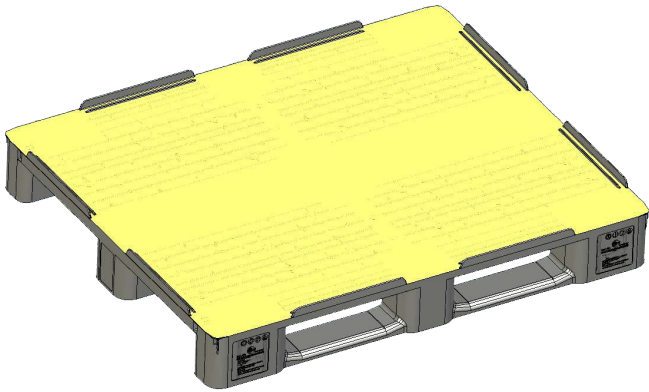
## 1200x1000 for sleeves

---

Add Sleeves and lid

# 1200X1000 **CLOSED DECK**

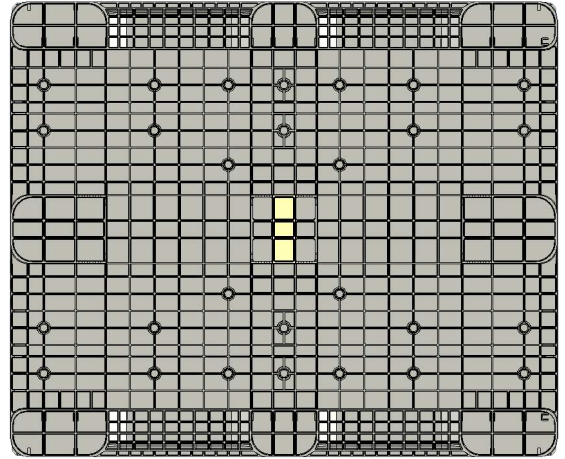
CAN COMBINED WITH **SLEEVE AND LID**



## **1200x1000 Closed Deck**

---

Planned component weight: 15,5-16 kg



## **1200x1000 Closed Deck Under**

---

Can be added with steel reinforcement



IPG **MEDIUM PALLET** CONCEPT  
AN **ECONOMY** INSPIRED BY THE  
CYCLUS OF **NATURE**



[WWW.IP-GROUP.COM](http://WWW.IP-GROUP.COM)

